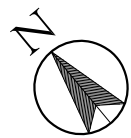
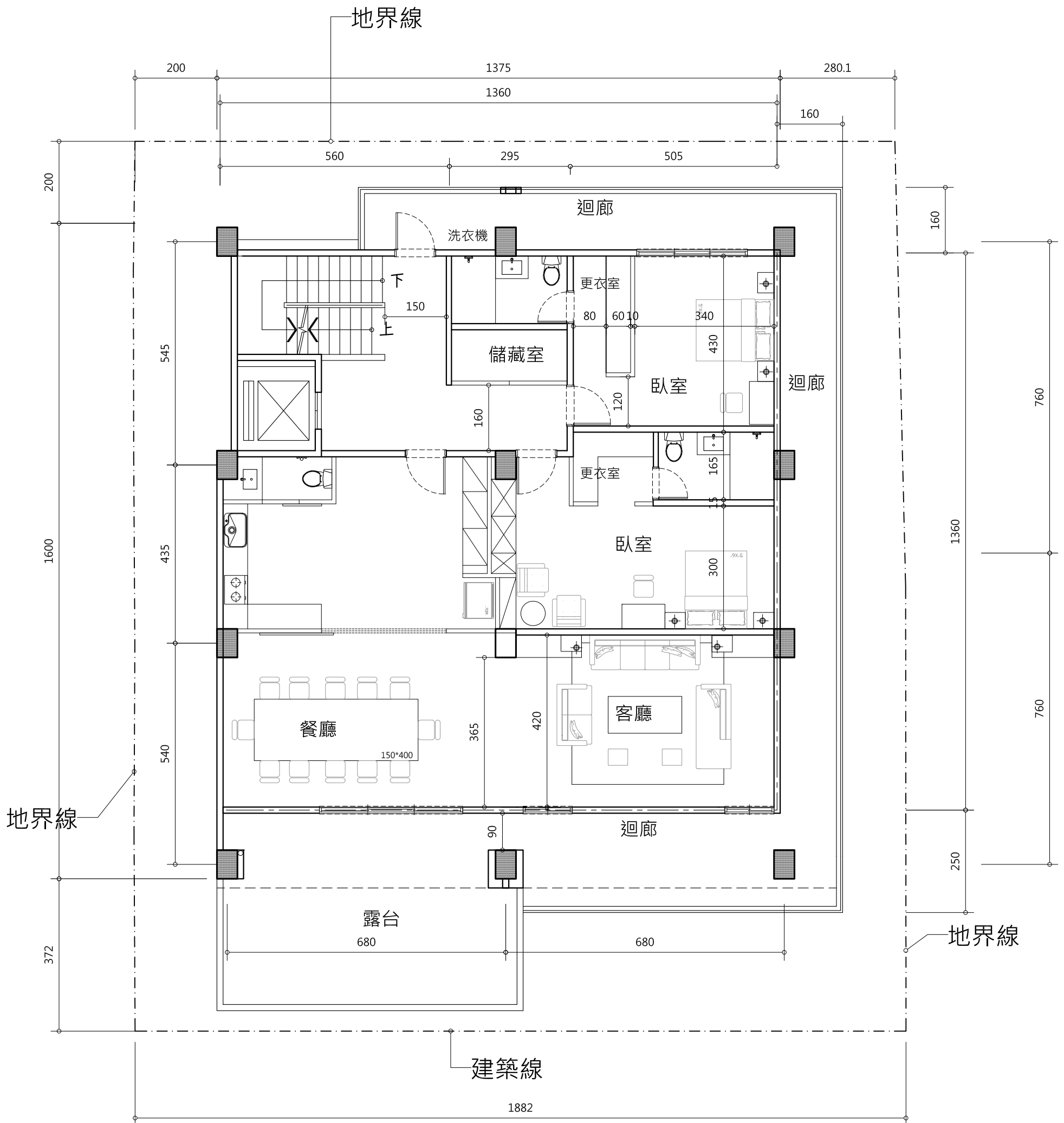


1 一樓平面圖
Scale=1/100

一樓面積:
235m² < 71.09坪 >

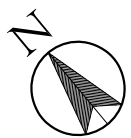
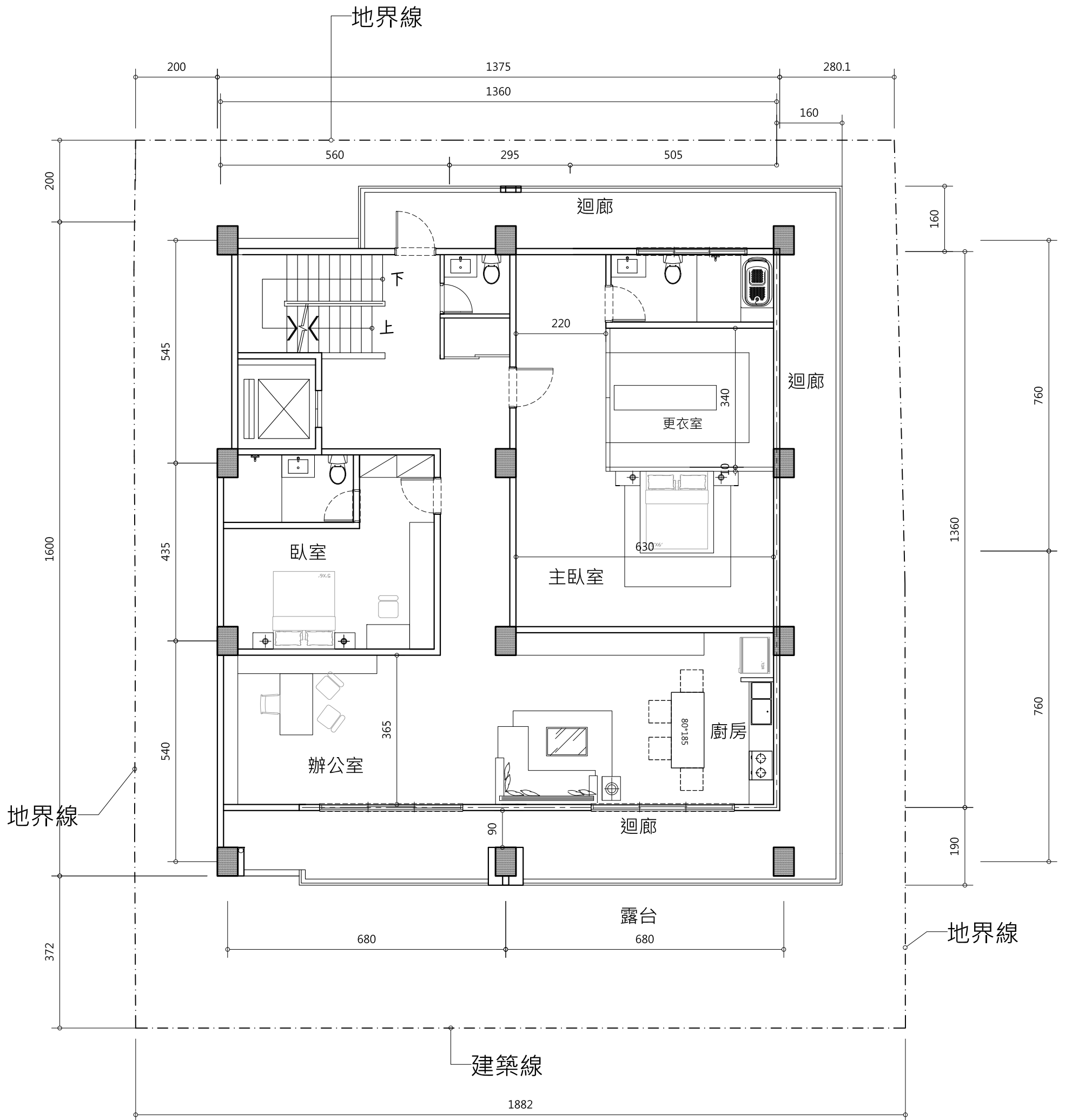


2 二樓平面圖

Scale=1/100

二樓面積:
188.49m² <57.02坪>

二樓外廊面積:
51.87=51.87m² <15.69坪>



3 三樓平面圖
Scale=1/100

三樓面積:
188.49m² <57.02坪>

三樓室內面積:

三樓外廊面積:
51.87=51.87m² <15.69坪>